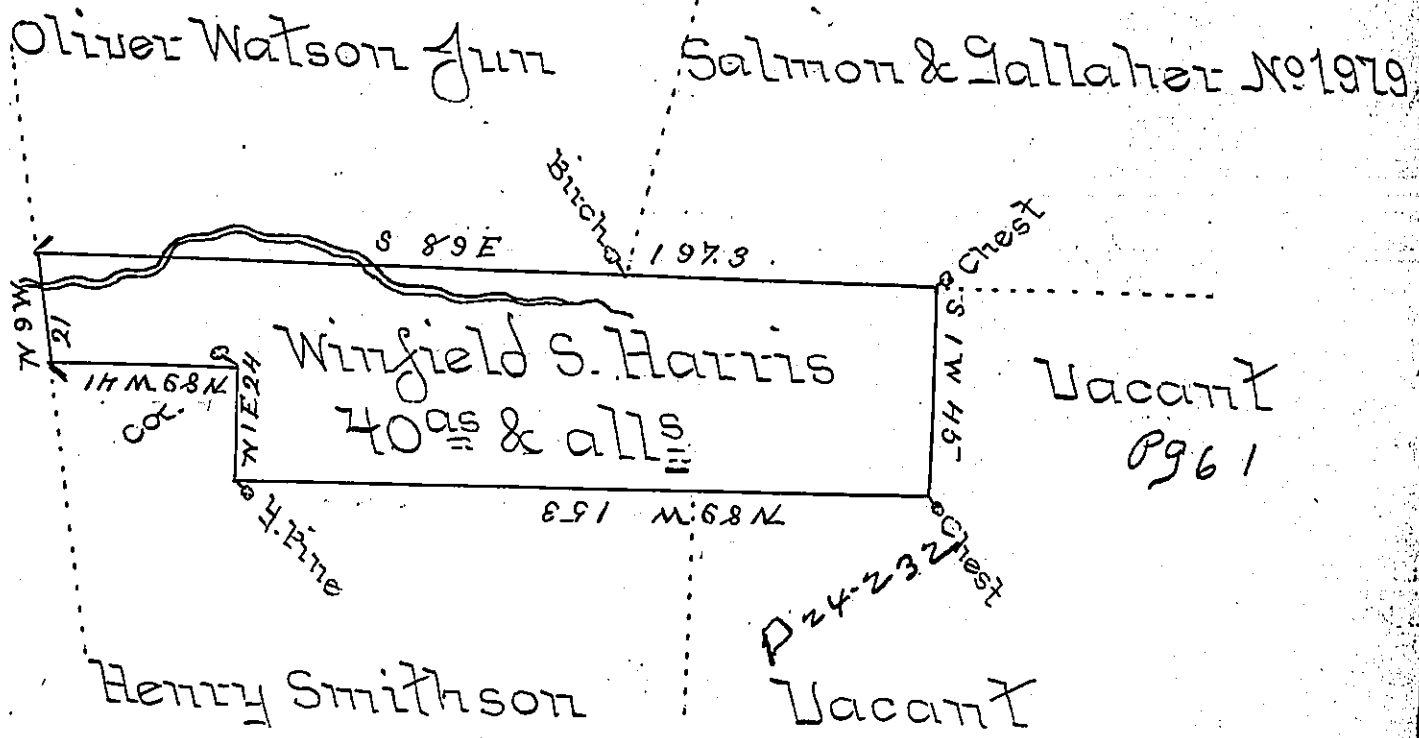


William Callahan Dec'd Suror to
James Straw bridge on Mar: No 20



Situate in Cummings Township Lycoming County on the East side of Little Pine Creek and bounded as above described, surveyed to Winfield S. Harris on the 13th day of January 1844 by virtue of his Warrant for 40 acres dated 30th March 1842 Containing forty acres with allowance of Six per Cent for Roads &c.

Alexander H McHenry D.S.
To Jacob Sallade Esquire }
Surveyor General - }

IN TESTIMONY that the above is a copy of the original remaining on file in the Department of Internal Affairs of Pennsylvania, made conformably to an Act of Assembly approved the 16th day of February, 1833, I have hereunto set my Hand and caused the Seal of said Department to be affixed at Harrisburg, this sixth day of June 1899.

James W. Patta
Secretary of Internal Affairs.